



HOT PLATES AND STEP UP



SHP-36-6



SHP-36-SU

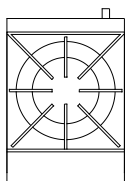
Stratus Hot Plates are designed of heavy gauge Stainless Steel with double insulated side panels. The heavy duty cast iron top grates and large plate ledge compliment the work space. Hot plate models ranged from one to eight open burners. All burners are interchangeable and are standard with continuous pilots for instant ignition.

Standard Features:

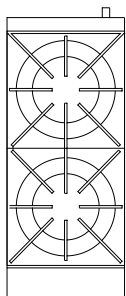
- Stainless steel front, sides and valve cover.
- Double side panel for better insulation.
- Heavy duty cast iron burners rated at 26,000 BTU's/hr.
- All burners are equipped with continuous anti-clogging pilots for instant ignition.
- Cast iron top grates. Cast in bowl directs heat upward. Grate design allows pots to slide pans easy from section to section.
- Stainless Steel 4" landing ledge provides extra work space.
- Large capacity grease can.
- 4" chrome plated adjustable appliance legs.
- One year warranty on parts and labor.

HEAVY DUTY HOT PLATE/ STEP UP

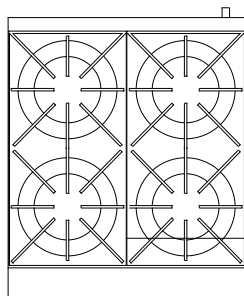
Model	SHP-12-1	SHP-12-2 SHP-12-SU	SHP-24-4 SHP-24-SU	SHP-36-6 SHP-36-SU	SHP-48-8 SHP-48-SU
Number of Burners	1	2	4	6	8
BTU's	26,000	52,000	104,000	156,000	208,000
HOT PLATE (WxDxH)	12"x19"x10"	12"x31"x10"	24"x31"x10"	36"x31"x10"	48"x31"x10"
STEP UP (WxDxH)	-----	12"x31"x14"	24"x31"x14"	36"x31"x14"	48"x31"x14"
HOT PLATE Weight	50 lbs.	80 lbs	140 lbs	230 lbs	310 lbs
STEP UP Weight	-----	85 lbs	148 lbs	238 lbs	318 lbs



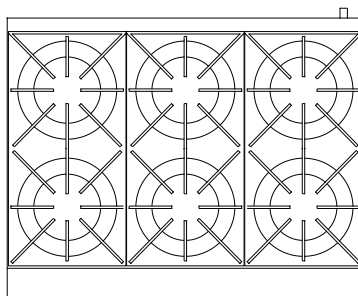
SHP-12-1



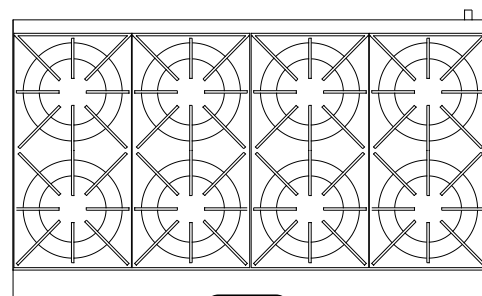
**SHP-12-2
SHP-12-SU**



**SHP-24-4
SHP-24-SU**



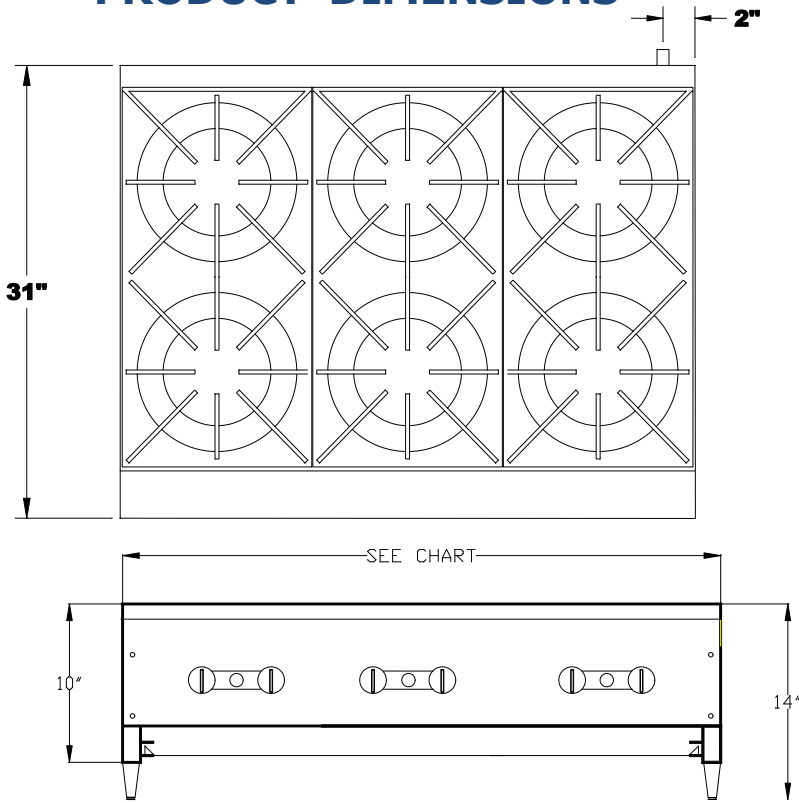
**SHP-36-6
SHP-36-SU**



**SHP-48-8
SHP-48-SU**



PRODUCT DIMENSIONS

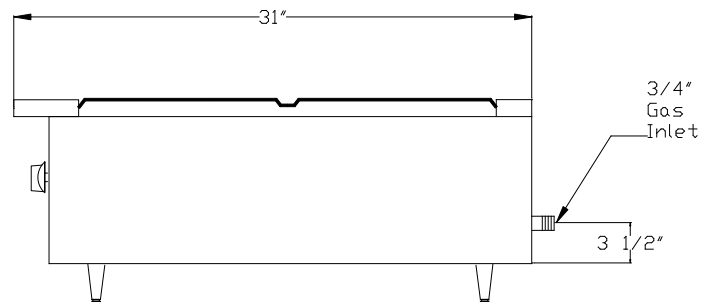


Clearances:

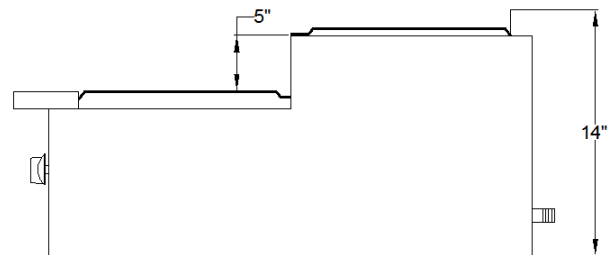
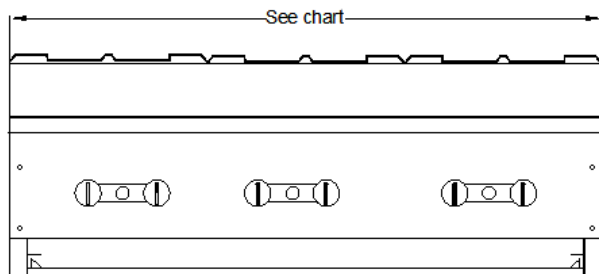
	Combustable	Non combustable
Rear	N/A	6"
Sides	N/A	6"

Gas Pressure:

5" W.C	Natural Gas
10" W.C	LP Gas



STEP UP HOT PLATE DIMENSION



Clearances:

Gas: 3/4" NPT rear gas connection, specify type of gas and altitude if over 2,000 feet.

Pressure: 5" W.C Natural Gas. 10" W.C Propane Gas.

Note: Install the pressure regulator supplied with the appliance, at the inlet of the gas line.



CONFORMS TO ANSI STD Z83.11, ANSI/NSF STD 4
CERTIFIED TO CSA STD 1.8

STRATUS EQUIPMENT INCORPORATED.

1760 West First st. Azusa CA 91702 Phone 626-969-7041 Fax 626-969-7078

www.stratusequipment.com

stratusequipment@yahoo.com